

TENDERIZE

WATANABE *S*line

WTR-AS

AUTO TENDER S LINE

Seeking unacceptable risk to “0”



“WATANABE S line” is “specialized in models for safety enhancement” which aims at risk reduction of food processing machinery use.

There is no “absolute safety” of food processing machinery use; however it is possible to reduce “Unacceptable risk”.

COVER

● Infeed cover



● Outfeed cover



Restrict the access to blades with the minimum open space and the infeed and outfeed integrated cover. The guard is covered until rollers part, it is prevented to an involvement accident.

SAFETY CONTROL



Double Control



Relay sequence



Safety controller

Safety sensor are installed each cover. Machine does not move with the cover opened. Safety control is adopted the double control to improve the safety and reliability.

*Safety sensor has an advantage in the reliability, breakdown detection, non-invalidation, compared with the proximity sensor.

BLADE



Tenderizing by a star-shape blade.

ADJUSTMENT



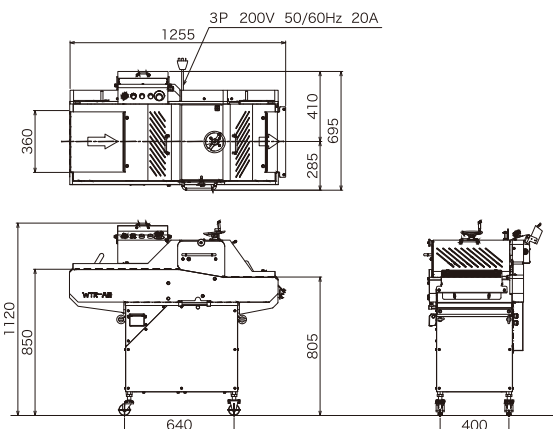
The gap between the blade set is adjustable by a smooth handle.

SPECIFICATION

DIMENTION	W1,255×D695×H1,120mm
WEIGHT	205kg
MAX. SLICE SIZE	W350×H20mm
CONVEYOR SPEED	~ 15m/min
CAPACITY	7200pieces/hour (Pork loin)
PROCESSING TEMPERATURE	-2 ~ +5°C (Depends on product)
RATED ELECTRICITY	Output:0.76kW Rated electric current:26A
RATED CONSUMPTION	0.21/0.21kW (50/60Hz with no load)
POWER SUPPLY	3P 200V 50/60Hz more than 20A

Processing temperature is reference value. It is changed depends on products.
Rated consumption is changed depends on the operation condition.
Make sure there is enough space around the machine for maintenance/cleaning.

DRAWING Please refer to the drawing for further information.



WATANABE S line is an upgraded model of safety features of WATANABE production, however there are not models to guarantee its safety in all of usage. Please use productions by following precautions and warning on the manual.
In the interests of improvement, the specifications and appearance of the product are subject to change without notice.

WATANABE
WATANABE FOODMACH CO.,LTD.

2-12-26 TSUYUHASHI NAKAGAWA-KU NAGOYA JAPAN
TEL (052) 361-8511 FAX (052) 361-8490
<http://www.foodmach.co.jp>

SALES AGENT